

SONOFF



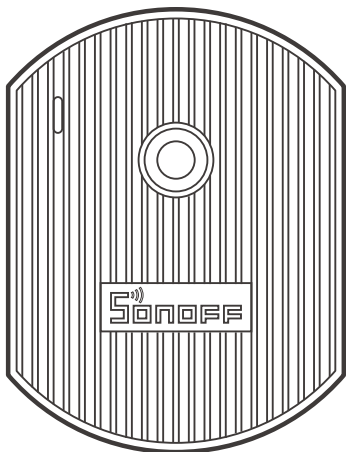
Lampini

LBS D1

e
support

Works with
everything

User manual V1.1



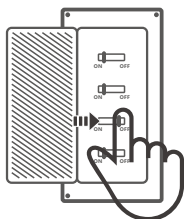
Wi-Fi Smart Dimmer Switch

· 中文-----	1-4	· English-----	5-9
· Deutsch-----	10-14	· Español-----	15-19
· Français-----	20-24	· Italiano-----	25-29
· Русский язык-----	30-34		

· FCC Warning-----35

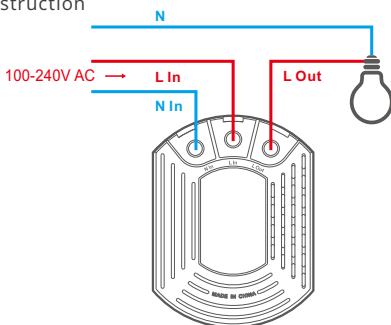
Operating Instruction

1. Power off



⚠ To avoid electric shocks, please consult the dealer or a qualified professional for help when installing and repairing! Please do not touch the switch during use.

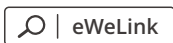
2. Wiring instruction



⚠ The device can only connect incandescent light bulb and dimmable LED light.

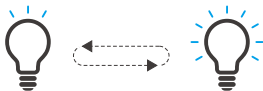
⚠ Make sure the neutral wire and live wire connection is correct.

3. Download APP



Android™ & iOS

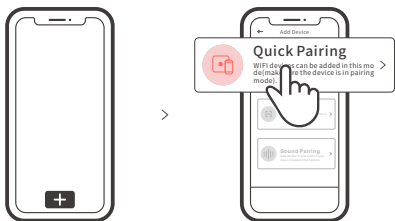
4. Power on



After powering on, the device will enter the quick pairing mode (Touch) during the first use. The connected light enters the “breathing mode”.

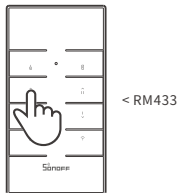
- ⚠ It will exit the quick pairing mode (Touch) if the device is not paired within 3mins. If you need to enter this mode again, please power off and restart the device until the connected light enters the “breathing mode”.

5. Add the device



Tap “+” and select “ Quick Pairing ”, then operate following the prompt on the app.

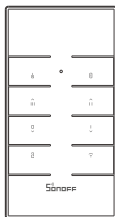
Pairing method for the device and SONOFF RM433 remote controller:



Short press any button on the RM433 remote controller within 5s after powering on until you hear “Bi”, which indicates all buttons are paired successfully.

- ⚠ The RM433 remote controller is not included, please purchase it separately.

RM433 Introduction



Buttons	Functions
	On
	Off
	Short press for the low brightness, long press to turn down the brightness
	Short press for the medium brightness, long press to turn down the brightness
	Short press for the higher brightness, long press to turn up the brightness
	Short press for the high brightness, long press to turn up the brightness
	Long press for 5s until you hear "Beep Beep" and release, then the remote controller is cleared successfully. After clearing code is completed, if you need to use, short press any button within 5s after powering on again and you will hear "Beep", which indicates the remote controller is paired successfully.
	Long press for 5s until the connected light enters the breathing mode, which indicates the device enters quick pairing mode (Touch), then you can add the light on eWeLink APP. In quick pairing mode, you can short press any button on the remote controller to exit this mode.

Specifications

Model	D1
Input	100-240V AC 50/60Hz
Output	100-240V AC 50/60Hz
Light Load	Incandescent:200W LED:150W
Operating systems	Android & iOS
Wi-Fi	IEEE 802.11 b/g/n 2.4GHz
RF	433.92MHz
Working temperature	-10°C~40°C
Material	PC V0
Dimension	62x47x32.5mm

Features

D1 is a Wi-Fi smart dimmer switch that is used to adjust the light brightness and set various atmosphere for your room. You can remotely turn on/off light of your home anywhere, schedule it on/off, or share it with your family to control together.



Remote Control

Single/Countdown
Timing

Voice Control



Share Control



Smart Scene

433MHz Remote
Control

Stepless dimming



Scene Mode



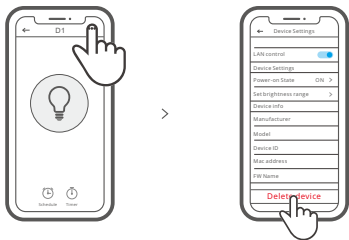
LAN Control



Group control

Factory Reset

Turn on and off 3 times on repeatedly or delete the connected light on eWeLink APP until it enters "breathing mode", then the device is reset successfully and enters quick pairing mode (Touch).



⚠ Please reset the device to factory defaults if you want to use other Wi-Fi networks, then reconnect the network.

FCC Warning

Changes or modifications not expressly approved by the party responsible for compliance could avoid the user's authority to operate the equipment.

This device complies with part 15 of the FCC Rules. Operation is subject to the following two conditions: (1) This device may not cause harmful interference, and (2) this device must accept any interference received, including interference that may cause undesired operation.

FCC Radiation Exposure Statement:

This equipment complies with FCC radiation exposure limits set forth for an uncontrolled environment. This equipment should be installed and operated with minimum distance 20cm between the radiator & your body. This transmitter must not be co-located or operating in conjunction with any other antenna or transmitter.

Note:

This equipment has been tested and found to comply with the limits for a Class B digital device, pursuant to part 15 of the FCC Rules. These limits are designed to provide reasonable protection against harmful interference in a residential installation. This equipment generates, uses and can radiate radio frequency energy and, if not installed and used in accordance with the instructions, may cause harmful interference to radio communications. However, there is no guarantee that interference will not occur in a particular installation. If this equipment does cause harmful interference to radio or television reception, which can be determined by turning the equipment off and on, the user is encouraged to try to correct the interference by one or more of the following measures:

- Reorient or relocate the receiving antenna.
- Increase the separation between the equipment and receiver.
- Connect the equipment into an outlet on a circuit different from that to which the receiver is connected.
- Consult the dealer or an experienced radio/TV technician for help.

Hereby, Shenzhen Sonoff Technologies Co., Ltd. declares that the radio equipment type D1 is in compliance with Directive 2014/53/EU. The full text of the EU declaration of conformity is available at the following internet address:

<https://sonoff.tech/usermanuals>

TX Frequency:

WiFi: 2412-2472MHz

RX Frequency:

WiFi: 2412-2472MHz SRD: 433.92MHz

Output Power:

11.52dBm(802.11b), 11.33dBm(802.11g), 11.07dBm(802.11n20)

The logo features the word "SONOFF" in a bold, black, sans-serif font. Above the letter "O" are three curved lines representing radio signal waves.

Shenzhen Sonoff Technologies Co., Ltd.

1001, BLDG8, Lianhua Industrial Park, shenzhen, GD, China
ZIP code: 518000

Website: sonoff.tech

MADE IN CHINA

