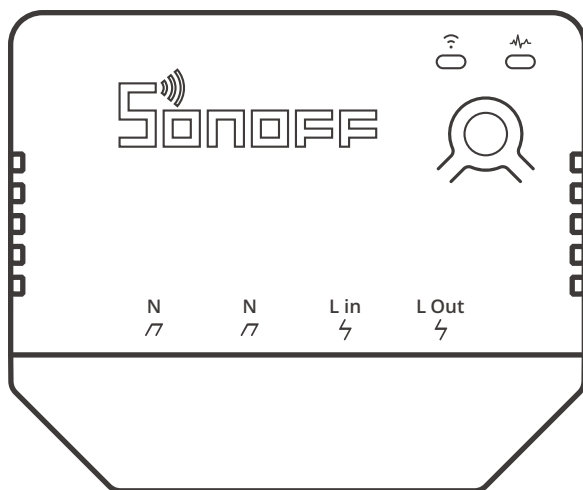


# SONOFF

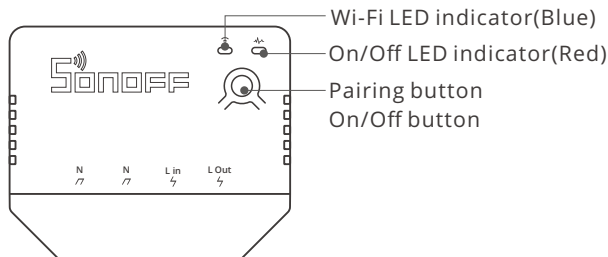
# MINIR3

User manual V1.2



Smart Switch

## Product Introduction



⚠ The device weight is less than 1 kg. The installation height of less than 2 m is recommended.

## Features

MINIR3 is a smart switch that can connect up to 16A electrical appliances. With the "eWeLink-Remote gateway" function, the eWeLink-Remote sub-devices can be added to the gateway to control the switch of the gateway at close range locally, and can also trigger other smart devices in the smart scene through the cloud.



Remote Control



Single/Countdown  
Timing



Voice Control



Share Control



Smart Scene



"eWeLink-Remote"  
control



Inching Mode



DIY Mode



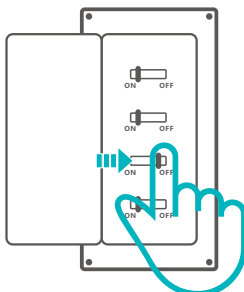
Group Control



LAN Control

## Operating Instruction

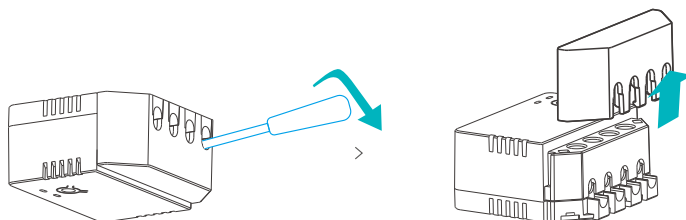
### 1. Power off



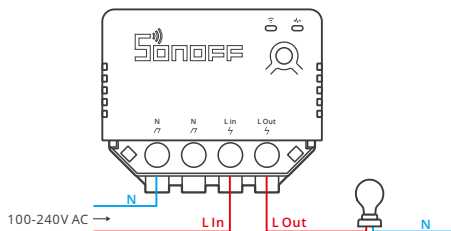
⚠ Please install and maintain the device by a professional electrician. To avoid electric shock hazard, do not operate any connection or contact the terminal connector while the device is powered on!

## 2. Wiring instruction

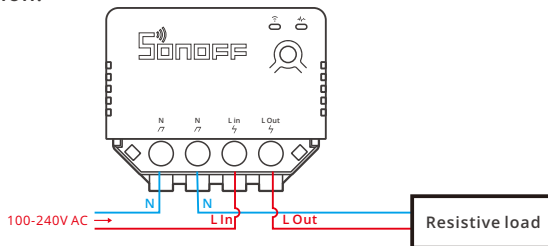
Before wiring, please remove the protective cover:



Light fixture wiring instruction:



Appliance wiring instruction:



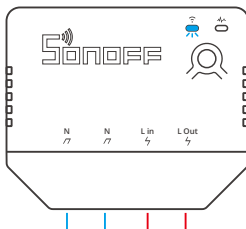
⚠ Close the protective cover after confirming the wiring is correct.

### 3. Download the eWeLink App



Android™ & iOS

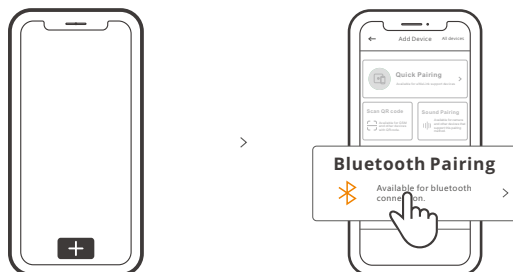
### 4. Power on



After powering on, the device will enter the bluetooth pairing mode during the first use. The Wi-Fi LED indicator changes in a cycle of two short and one long flash and release.

⚠ The device will exit the bluetooth pairing mode if not paired within 3mins. If you want to enter this mode, please long press the manual button for about 5s until the Wi-Fi LED indicator changes in a cycle of two short and one long flash and release.

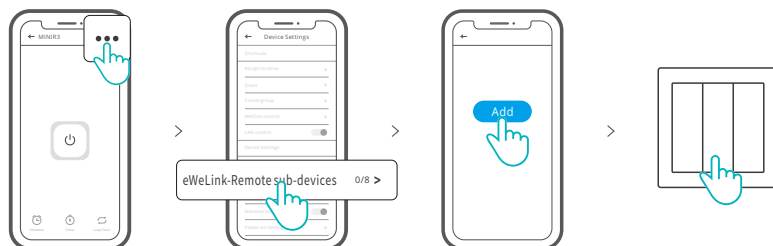
### 5. Pair with eWeLink App



Tap "+" and select "bluetooth pairing", then operate following the prompt on the APP.

## Add eWeLink-Remote Sub-devices

Enter the MINIR3 setting page, click eWeLink-Remote sub-devices on the App and trigger the sub-device by pressing the button on the device, then it will be added successfully.



⚠ This device can be added up to 8 sub-devices.

## Specifications

Model	MINIR3	
Input	100-240V ~ 50/60Hz 16A Max	
Output	100-240V ~ 50/60Hz 16A Max	
Max.load	3500W	
Wi-Fi	IEEE 802.11 b/g/n 2.4GHz	
Frequency range	2400-2483.5Mhz	
Version Information	Hardware Versions: V1.0	Software Versions: V1.0
Maximum RF output power	Wi-Fi: 18dbm(e.i.r.p)	BLE: 10dbm(e.i.r.p)
“eWeLink Remote” receiving distance	Up to 50M	
Working temperature	-10°C~40°C	
Operating systems	Android & iOS	
Shell material	PC V0	
Dimension	54x45x24mm	

## Wi-Fi LED indicator status instruction

LED indicator status	Status instruction
Flashes (one long and two short)	Bluetooth Pairing Mode
Flashes quickly	DIY Pairing Mode
Keeps on	Device is Oline
Flashes quickly once	Fail to Connect to Router
Flashes quickly twice	Connected to Router but Fail to Connect to Serve
Flashes quickly three times	Firmware Updating

## DIY Mode

The DIY Mode is designed for IoT home automation users and developers who would like to control the SONOFF device via existing home automation open-source platforms or local HTTP clients instead of the eWeLink App (<https://sonoff.tech>).

### How to enter the DIY Pairing Mode:

Long press Pairing button for 5s until the Wi-Fi LED indicator changes in a cycle of two short flashes and one long flash and release. Long press Pairing button for 5s again until the Wi-Fi LED indicator flashes quickly. Then, the device enters DIY Pairing Mode.

⚠ The device will exit the DIY Pairing Mode if not paired within 3mins.

## Factory Reset

Deleting the device on the eWeLink app indicates you restore it to factory setting.

## Common Problems

### Fail to pair Wi-Fi devices to eWeLink APP

1. Make sure the device is in pairing mode. After three minutes of unsuccessful pairing, the device will automatically exit pairing mode.
2. Please turn on location services and allow location permission. Before choosing the Wi-Fi network, location services should be turned on and location permission should be allowed. Location information permission is used to obtain Wi-Fi list information. If you click Disable, you will not be able to add devices.
3. Make sure your Wi-Fi network runs on the 2.4GHz band.
4. Make sure you entered a correct Wi-Fi SSID and password, no special characters contained. Wrong password is a very common reason for pairing failure.
5. The device shall get close to the router for a good transmission signal condition while pairing.

### Wi-Fi devices "Offline" issue, Please check the following problems by the Wi-Fi LED indicator status:

The LED indicator blinks once every 2s means you fail to connect to the router.

1. Maybe you entered the wrong Wi-Fi SSID and password.
2. Make sure that your Wi-Fi SSID and password don't contain special characters, for example, the Hebrew, Arabic characters, our system can't recognize these characters and then fail to connect to the Wi-Fi.
3. Maybe your router has a lower carrying capacity.
4. Maybe the Wi-Fi strength is weak. Your router is too far away from your device, or there may be some obstacle between the router and device which blocks the signal transmission.
5. Be sure that the MAC of the device is not on the blacklist of your MAC management.

The LED indicator flashes twice on repeated means you fail to connect to the server.

1. Make sure the Internet connection is working. You can use your phone or PC to connect to the Internet, and if it fails to access, please check the availability of the Internet connection.
2. Maybe your router has a low carrying capacity. The number of devices connected to the router exceeds its maximum value. Please confirm the maximum number of devices that your router can carry. If it exceeds, please delete some devices or get a larger router and try again.
3. Please contact your ISP and confirm our server address is not shielded:  
cn-disp.coolkit.cc (China Mainland)  
as-disp.coolkit.cc (in Asia except China)  
eu-disp.coolkit.cc (in EU)  
us-disp.coolkit.cc (in US)

If none of the above methods solved this problem, please submit your request via help&feedback on the eWeLink APP.

## FCC Warning

Changes or modifications not expressly approved by the party responsible for compliance could avoid the user's authority to operate the equipment.

This device complies with part 15 of the FCC Rules. Operation is subject to the following two conditions: (1) This device may not cause harmful interference, and (2) this device must accept any interference received, including interference that may cause undesired operation.

### FCC Radiation Exposure Statement:

This equipment complies with FCC radiation exposure limits set forth for an uncontrolled environment. This equipment should be installed and operated with minimum distance 20cm between the radiator & your body. This transmitter must not be co-located or operating in conjunction with any other antenna or transmitter.

### Note:

This equipment has been tested and found to comply with the limits for a Class B digital device, pursuant to part 15 of the FCC Rules. These limits are designed to provide reasonable protection against harmful interference in a residential installation. This equipment generates, uses and can radiate radio frequency energy and, if not installed and used in accordance with the instructions, may cause harmful interference to radio communications. However, there is no guarantee that interference will not occur in a particular installation. If this equipment does cause harmful interference to radio or television reception, which can be determined by turning the equipment off and on, the user is encouraged to try to correct the interference by one or more of the following measures:

- Reorient or relocate the receiving antenna.
- Increase the separation between the equipment and receiver.
- Connect the equipment into an outlet on a circuit different from that to which the receiver is connected.
- Consult the dealer or an experienced radio/TV technician for help.

Hereby, Shenzhen Sonoff Technologies Co., Ltd. declares that the radio equipment type MINIR3 is in compliance with Directive 2014/53/EU. The full text of the EU declaration of conformity is available at the following internet address:

<https://sonoff.tech/usermanuals>



## Shenzhen Sonoff Technologies Co., Ltd.

1001, BLDG8, Lianhua Industrial Park, shenzhen, GD, China  
ZIP code: 518000 Website: sonoff.tech

MADE IN CHINA

