

SONOFF

S S55

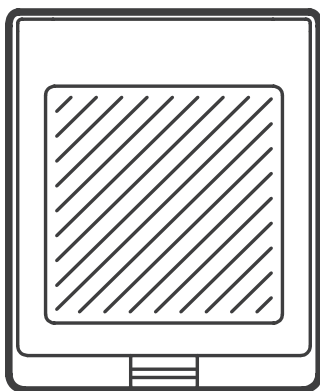
User manual V1.2



Lampini

e
support

Works with
everything



Waterproof Wi-Fi Socket

· English-----1 - 6

· Español-----13-18

· Italiano-----25-30

· FCC Warning-----37

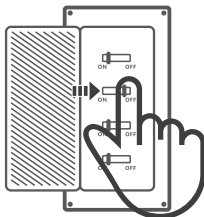
· Deutsch -----7-12

· Français-----19-24

· Русский язык-----31-36

Operating Instruction

1. Power off



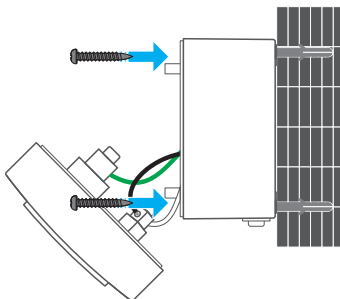
⚠ To avoid electric shocks, please consult the dealer or a qualified professional for help when installing and repairing!

2. Install socket

Fix screw anchors and mount the socket onto the wall with screws.



Screw anchor

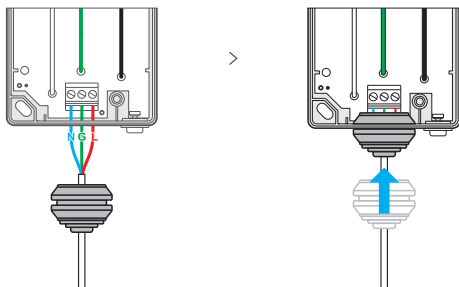


⚠ The device weight is less than 1 kg.
The installation height of less than 2 m is recommended.

3. Wiring instruction

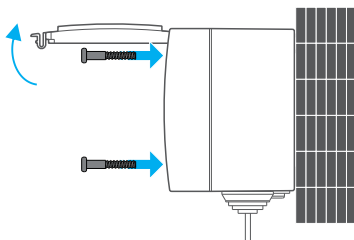


3-1: Take the waterproof rubber stopper out before wiring, then punch holes and feed in wires.



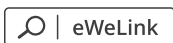
3-2: Make sure correct wiring and install the waterproof rubber stopper into the socket.

4. Install upper cover



Attach the upper cover and open the waterproof cover, then fasten it to the bottom cover with screws.

5. Download APP



Android™ & iOS

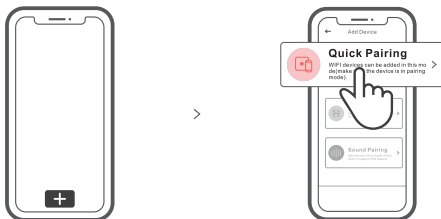
6. Power on



After powering on, the device will enter the quick pairing mode (Touch) during the first use. The Wi-Fi LED indicator changes in a cycle of two short and one long flash and release.

- ⚠ The device will exit the quick pairing mode (Touch) if not paired within 3mins. If you want to enter this mode, please long press the pairing button for about 5s until the Wi-Fi LED indicator changes in a cycle of two short and one long flash and release.

7. Add the device



Tap "+" and select "Quick Pairing", then operate following the prompt on the APP.

Compatible Pairing Mode

If you fail to enter Quick Pairing Mode (Touch), please try "Compatible Pairing Mode" to pair.

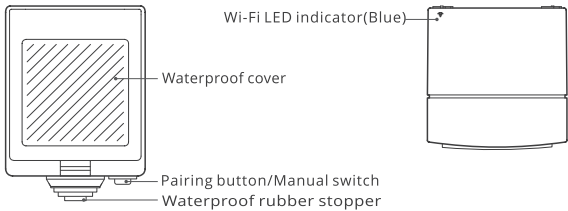
- 1 Long press Pairing button for 5s until the Wi-Fi LED indicator changes in a cycle of two short flashes and one long flash and release. Long press Pairing button for 5s again until the Wi-Fi LED indicator flashes quickly. Then, the device enters Compatible Pairing Mode.
- 2 Tap "+" and select "Compatible Pairing Mode" on APP.

Select Wi-Fi SSID with ITEAD-***** and enter the password 12345678, and then go back to eWeLink APP and tap "Next". Be patient until pairing completes.

Specifications

Model	S55TPI/S55TPF/S55TPE/S55TPB/S55TPD/S55TPG
Input	S55TPI: 100-240V AC 50/60Hz 10A Max S55TPF: 100-240V AC 50/60Hz 16A Max S55TPE: 100-240V AC 50/60Hz 16A Max S55TPB: 125V AC 50/60Hz 15A Max S55TPD: 100-240V AC 50/60Hz 10A Max S55TPG: 100-240V AC 50/60Hz 13A Max
Output	S55TPI: 100-240V AC 50/60Hz 10A Max S55TPF: 100-240V AC 50/60Hz 16A Max S55TPE: 100-240V AC 50/60Hz 16A Max S55TPB: 125V AC 50/60Hz 15A Max S55TPD: 100-240V AC 50/60Hz 10A Max S55TPG: 100-240V AC 50/60Hz 13A Max
Wi-Fi	IEEE 802.11 b/g/n 2.4GHz
Operating systems	Android & iOS
Material	PC
Dimension	85x70x70mm

Product Introduction



Wi-Fi LED indicator status instruction

Wi-Fi LED indicator status	Status instruction
Flashes (one long and two short)	Quick Pairing Mode
Keeps on	Device is connected successfully
Flashes quickly	Compatible Pairing Mode
Flashes quickly once	Unable to discover the router
Flashes quickly twice	Connect to the router but fail to connect to Wi-Fi
Flashes quickly three times	Upgrading

Features

S55 is a smart waterproof socket specially designed for outdoor work, suitable for various occasions, including garden, patio, open-air restaurant and more. You can turn on/off, schedule on/off, voice control and share control the socket with your family via a smartphone.



Remote Control

Single/Countdown
Timing

Voice Control



Share Control



Smart scene



IP55 Waterproof



Power-on State



Camera Feature



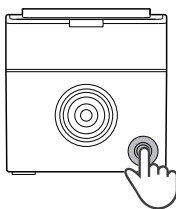
Group control



LAN Control

Switch Network

If you need to change the network, long press the pairing button for 5s until the Wi-Fi LED indicator changes in a cycle of two short and one long flash and release, then the device enters quick pairing mode and you can pair again.



Factory Reset

Deleting the device on the eWeLink app indicates you restore it to factory setting.

Common Problems

Q: Why my device stays "Offline"?

A: The newly added device needs 1 – 2mins to connect Wi-Fi and network. If it stays offline for a long time, please judge these problems by the blue Wi-Fi indicator status:

1. The blue Wi-Fi indicator quickly flashes once per second, which means that the switch failed to connect your Wi-Fi:
 - ① Maybe you have entered a wrong Wi-Fi password.
 - ② Maybe there's too much distance between the switch your router or the environment causes interference, consider getting close to the router. If failed, please add it again.
 - ③ The 5G Wi-Fi network is not supported and only supports the 2.4GHz wireless network.
 - ④ Maybe the MAC address filtering is open. Please turn it off.

If none of the above methods solved the problem, you can open the mobile datanetwork on your phone to create a Wi-Fi hotspot, then add the device again.

2. Blue indicator quickly flashes twice per second, which means your device has connected to Wi-Fi but failed to connect to the server.

Ensure steady enough network. If double flash occurs frequently, which means you access an unsteady network, not a product problem. If thenetwork is normal, try to turn off the power to restart the switch.

FCC Warning

Changes or modifications not expressly approved by the party responsible for compliance could avoid the user's authority to operate the equipment.

This device complies with part 15 of the FCC Rules. Operation is subject to the following two conditions: (1) This device may not cause harmful interference, and (2) this device must accept any interference received, including interference that may cause undesired operation.

FCC Radiation Exposure Statement:

This equipment complies with FCC radiation exposure limits set forth for an uncontrolled environment. This equipment should be installed and operated with minimum distance 20cm between the radiator & your body. This transmitter must not be co-located or operating in conjunction with any other antenna or transmitter.

Note:

This equipment has been tested and found to comply with the limits for a Class B digital device, pursuant to part 15 of the FCC Rules. These limits are designed to provide reasonable protection against harmful interference in a residential installation. This equipment generates, uses and can radiate radio frequency energy and, if not installed and used in accordance with the instructions, may cause harmful interference to radio communications. However, there is no guarantee that interference will not occur in a particular installation. If this equipment does cause harmful interference to radio or television reception, which can be determined by turning the equipment off and on, the user is encouraged to try to correct the interference by one or more of the following measures:

- Reorient or relocate the receiving antenna.
- Increase the separation between the equipment and receiver.
- Connect the equipment into an outlet on a circuit different from that to which the receiver is connected.
- Consult the dealer or an experienced radio/TV technician for help.

Hereby, Shenzhen Sonoff Technologies Co., Ltd. declares that the radio equipment type S55TPE/S55TPF/S55TPG/S55TPB/S55TPI/S55TPD is in compliance with Directive 2014/53/EU. The full text of the EU declaration of conformity is available at the following internet address:

<https://sonoff.tech/usermanuals>

TX Frequency:

WiFi: 2412-2472MHz

RX Frequency:

WiFi: 2412-2472MHz

Output Power:

17.18dBm(802.11b), 15.48dBm(802.11g), 15.35dBm(802.11n20)



Shenzhen Sonoff Technologies Co., Ltd.

1001, BLDG8, Lianhua Industrial Park, shenzhen, GD, China
ZIP code: 518000 Website: sonoff.tech

MADE IN CHINA

