

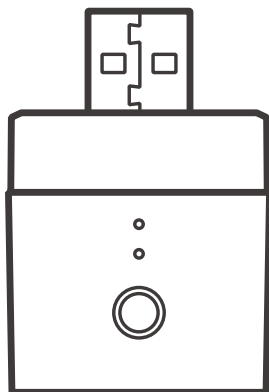


Lampini

DIY Micro



User manual V1.0

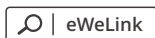


USB Smart Adapter

· 中文	1-4	· English	5-8
· Deutsch	9-12	· Español	13-16
· Français	17-20	· Italiano	21-24
· Русский язык	25-28	· Português	29-32
· FCC Warning	33		

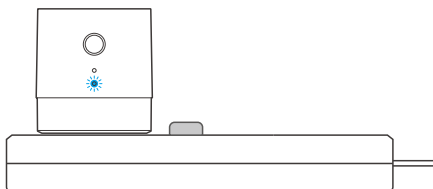
Operation instruction

1. Download eWeLink APP



Android™ & iOS

2. Power on

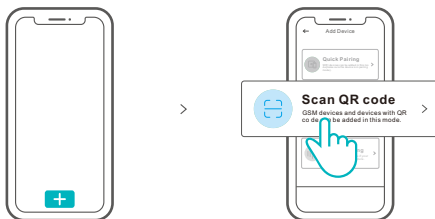


Powering on, the device will enter the quick pairing mode (Touch) during the first use. The Wi-Fi indicator flashes quickly.

⚠ It will exit the pairing mode (Touch) if the device is not paired within 3mins. If you want to enter this mode again, long press the configuration button for 5s until the Wi-Fi indicator flashes quickly and release.

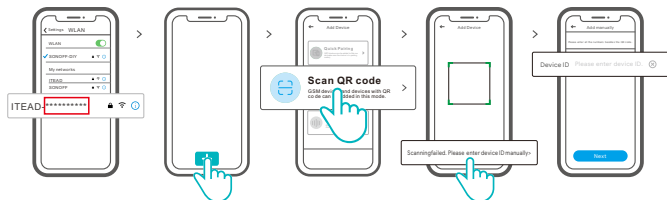
3. Add the device

Method 1: Scan the code to add (recommended)



Tap "+" and select "Scan QR code", then scan the QR code on the card in the package to add the device.

Method 2: manual to add

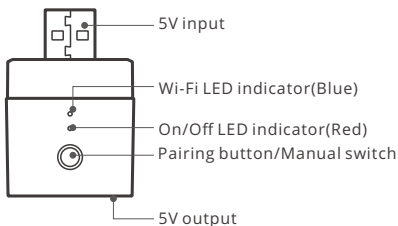


- ① Set the device to the pairing mode, and find the Wi-Fi SSID with ITEAD-***** on your mobile phone, and save last 10 digital codes (The digital code is the unique ID of the device)
- ② Go back to "eWeLink" App, tap "+", select "Scan QR code", then tap the word "Scanning failed. Please enter device ID manually" on the bottom and save the device ID, tap "Next" and wait until the adding is successful.

Specifications

Model	Micro
Input	5V \equiv
Output	5V \equiv 2.5A
Operating systems	Android & iOS
Wi-Fi	IEEE 802.11 b/g/n 2.4GHz
Working temperature	-10°C ~ 40°C
Material	PC V0
Dimension	31x26.5x33mm

Product Introduction



Wi-Fi LED indicator status instruction

LED indicator status	Status instruction
Blue light flashes quickly	Pairing mode
Blue light is always on	Device is connected successfully
Blue light flashes quickly once	Unable to find the router
Blue light flashes quickly twice	Successfully connect to the router but Wi-Fi is not connected
Blue light flashes quickly three times	Upgrading

Features

Micro is a portable mini USB smart adaptor that makes your USB devices smart. You can remotely turn on/off the connected devices of your home anywhere, schedule it on/off and share it with your family to control together.



Remote Control



Single/Countdown Timing



Voice Control



Share Control



Sync Status



Camera Linking



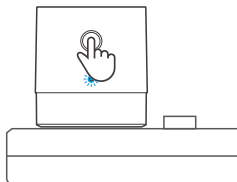
Power-on State



Smart Scene

Switch Network

If you need to change the network, long press the pairing button for 5s until the Wi-Fi indicator flashes quickly and release., then the device enters pairing mode and you can pair again.



Factory Reset

Deleting the device on the eWeLink app indicates you restore it to factory setting.

Common Problems

Q: Why my device stays "Offline"?

A: The newly added device needs 1 – 2mins to connect Wi-Fi and network. If it stays offline for a long time, please judge these problems by the blue Wi-Fi indicator status:

1. The blue Wi-Fi indicator quickly flashes once per second, which means that the switch failed to connect your Wi-Fi:
 - ① Maybe you have entered a wrong Wi-Fi password.
 - ② Maybe there's too much distance between the switch your router or the environment causes interference, consider getting close to the router. If failed, please add it again.
 - ③ The 5G Wi-Fi network is not supported and only supports the 2.4GHz wireless network.
 - ④ Maybe the MAC address filtering is open. Please turn it off.

If none of the above methods solved the problem, you can open the mobile datanetwork on your phone to create a Wi-Fi hotspot, then add the device again.

2. Blue indicator quickly flashes twice per second, which means your device has connected to Wi-Fi but failed to connect to the server.

Ensure steady enough network. If double flash occurs frequently, which means you access an unsteady network, not a product problem. If thenetwork is normal, try to turn off the power to restart the switch.

FCC Warning

Changes or modifications not expressly approved by the party responsible for compliance could avoid the user's authority to operate the equipment.

This device complies with part 15 of the FCC Rules. Operation is subject to the following two conditions: (1) This device may not cause harmful interference, and (2) this device must accept any interference received, including interference that may cause undesired operation.

FCC Radiation Exposure Statement:

This equipment complies with FCC radiation exposure limits set forth for an uncontrolled environment. This equipment should be installed and operated with minimum distance 20cm between the radiator & your body. This transmitter must not be co-located or operating in conjunction with any other antenna or transmitter.

Note:

This equipment has been tested and found to comply with the limits for a Class B digital device, pursuant to part 15 of the FCC Rules. These limits are designed to provide reasonable protection against harmful interference in a residential installation. This equipment generates, uses and can radiate radio frequency energy and, if not installed and used in accordance with the instructions, may cause harmful interference to radio communications. However, there is no guarantee that interference will not occur in a particular installation. If this equipment does cause harmful interference to radio or television reception, which can be determined by turning the equipment off and on, the user is encouraged to try to correct the interference by one or more of the following measures:

- Reorient or relocate the receiving antenna.
- Increase the separation between the equipment and receiver.
- Connect the equipment into an outlet on a circuit different from that to which the receiver is connected.
- Consult the dealer or an experienced radio/TV technician for help.

Hereby, Shenzhen Sonoff Technologies Co., Ltd. declares that the radio equipment type Micro is in compliance with Directive 2014/53/EU. The full text of the EU declaration of conformity is available at the following internet address:

<https://www.sonoff.tech/usermanuals>

TX Frequency:

WiFi: 2412-2472MHz/2422-2462MHz

RX Frequency:

WiFi: 2412-2472MHz/2422-2462MHz

Output Power:

11.49dBm(802.11b), 10.61dBm(802.11g),
11.09dBm(802.11n20), 11.44dBm(802.11n40)



Shenzhen Sonoff Technologies Co., Ltd.

1001, BLDG8, Lianhua Industrial Park, shenzhen, GD, China

ZIP code: 518000

Website: sonoff.tech

MADE IN CHINA

