

# SONOFF

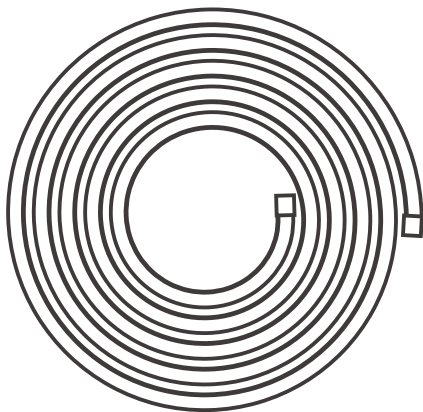


Lampini

## LBS L1/L1 Lite



User manual V1.1

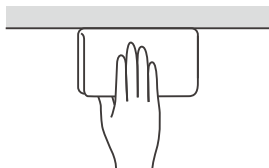


## Wi-Fi Smart LED Light Strip

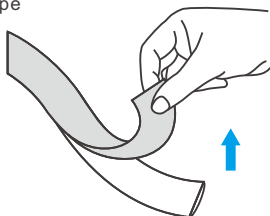
· 中 文 -----	1 - 4	· English -----	5-8
· Deutsch -----	9-12	· Español -----	13-16
· Français -----	17-20	· Italiano-----	21-24
· Русский язык--	25-28	· Português---	29-32
.....			
· FCC Warning-----	33		

# Operation instruction

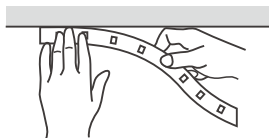
## 1. Clean the surface



## 2. Tear the backing tape



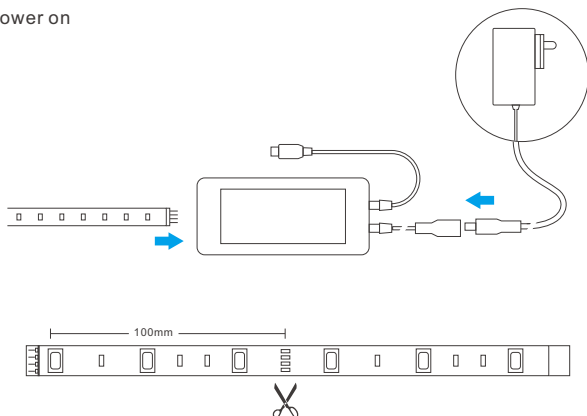
## 3. Adhere it to the surface



## 4. Download APP

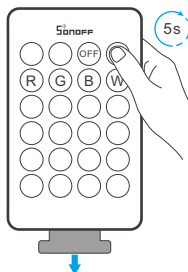


## 5. Power on



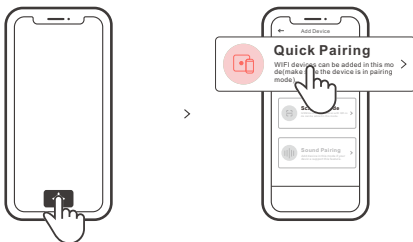
ⓘ Cutable every 100mm

6. Pull out the insulation sheet, then long press “on” button for 5s until the light strip “flashes”, which means it enters the quick pairing mode.



ⓘ The device will exit the quick pairing mode if not paired within 3mins. If you want to enter this mode again, long press the “on” button on the remote controller for 5s until the light strip “flashes” and release.

7. Tap "+" and select "Quick Pairing", then operate following the prompt on the app.



## Compatible Pairing Mode

If you fail to enter Quick Pairing Mode (Touch), please try "Compatible Pairing Mode" to pair.

- 1 Long press the "on" button on the remote controller for 5s until the device "flashes" and release. Long press this button for 5s again until the device status changes from "flashing" to "quick flashing", then the device enters the Compatible Pairing Mode.
- 2 Tap "+" and select "Compatible Pairing Mode" on APP.

Select Wi-Fi SSID with ITEAD-\*\*\*\*\* and enter the password 12345678, and then go back to eWeLink APP and tap "Next". Be patient until pairing completes.

## Specifications

**Model: L1-2M/L1-5M/L1 Lite-5M-EU/L1 Lite-5M-US**

LED Light Strips

Input Voltage	DC 12V	LED QTY	30LEDs/m
Luminous Flux	≥300lumens/m	Life Expectancy	> 25000 hours
Beam Angle	L1: 140°    L1 Lite: 120°	Operating Temperature	−15°C ~ 50°C
Working Humidity	≤95%	Protect Range	L1: IP65 L1 Lite: IP20
Material	FPCB		
Light Decay	Less than 3% after 1000 hours constant work		

Power Adapter

Input	100-240V AC 50/60Hz 0.6A Max	Output	DC 12V 2000mA(24W)
Protection	Anti-overvoltage, Anti-overload, Anti-temperature		

## Wi-Fi Controller

Input	DC 5-24V	Power	144W
Remote Control	24 Keys IR Remote Controller	Wi-Fi	IEEE 802.11 b/g/n 2.4GHz
Remote controller battery	3V(CR2025)	Operating systems	Android & iOS

## Features of the Smart LED Light Strip

- SMD5050 LED Beads; FPCB Circuit Board; Every 3 LED lights in one segment.
- Main Colors of the Light: Red/Blue/Green.



APP Control



Voice Control

Single/Countdown  
Timing

Share Control

Music Reactive  
Mode

16M Colors



Remote control

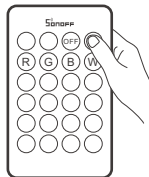


Color Picker

## Factory Reset

Long press the "on" button on the remote controller for 5s until the device starts flashing, then the device has been reset successfully and enters the quick pairing mode.

- ⚠ When the light strip is used on a new network, it must first be reset to its factory settings and then set up again on the new network.



## Safety Warning

1. Before using this product, please make sure that your voltage is appropriate for this product's working voltage. Using this product with a voltage other than the one specified may damage the product and cause safety hazards.
2. LED Light Sources are unchangeable, please don't dismantle them.
3. While the Light Strip is working, it will generate heat so please keep it in a cross-ventilation environment for heat dissipation.

## FCC Warning

Changes or modifications not expressly approved by the party responsible for compliance could avoid the user's authority to operate the equipment.

This device complies with part 15 of the FCC Rules. Operation is subject to the following two conditions: (1) This device may not cause harmful interference, and (2) this device must accept any interference received, including interference that may cause undesired operation.

### **FCC Radiation Exposure Statement:**

This equipment complies with FCC radiation exposure limits set forth for an uncontrolled environment. This equipment should be installed and operated with minimum distance 20cm between the radiator & your body. This transmitter must not be co-located or operating in conjunction with any other antenna or transmitter.

### **Note:**

This equipment has been tested and found to comply with the limits for a Class B digital device, pursuant to part 15 of the FCC Rules. These limits are designed to provide reasonable protection against harmful interference in a residential installation. This equipment generates, uses and can radiate radio frequency energy and, if not installed and used in accordance with the instructions, may cause harmful interference to radio communications. However, there is no guarantee that interference will not occur in a particular installation. If this equipment does cause harmful interference to radio or television reception, which can be determined by turning the equipment off and on, the user is encouraged to try to correct the interference by one or more of the following measures:

- Reorient or relocate the receiving antenna.
- Increase the separation between the equipment and receiver.
- Connect the equipment into an outlet on a circuit different from that to which the receiver is connected.
- Consult the dealer or an experienced radio/TV technician for help.

Hereby, Shenzhen Sonoff Technologies Co., Ltd. declares that the radio equipment type L1-2M/L1-5M/L1 Lite-5M-US/L1 Lite-5M-EU is in compliance with Directive 2014/53/EU. The full text of the EU declaration of conformity is available at the following internet address:

**<https://sonoff.tech/usermanuals>**



**Shenzhen Sonoff Technologies Co., Ltd.**

1001, BLDG8, Lianhua Industrial Park, shenzhen, GD, China  
ZIP code: 518000 Website: sonoff.tech

MADE IN CHINA



**RoHS**

