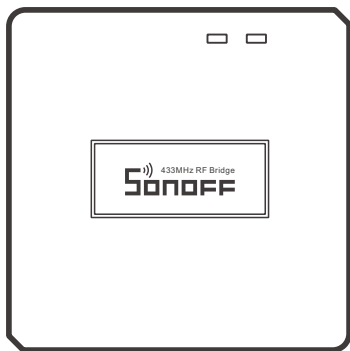


# SONOFF

## RF Bridge

User manual V1.2

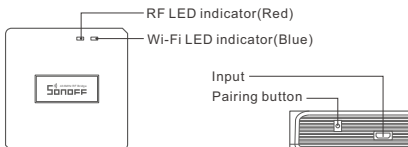
Lampini



## 433MHz RF Bridge

---

## Product Introduction



- ⚠ The device weight is less than 1 kg.  
The installation height of less than 2 m is recommended.

## LED indicator status instruction

LED indicator status	Status instruction
Blue LED flashes (one long and two short)	Quick Pairing Mode
Blue LED flashes quickly	Compatible Pairing Mode (AP)
Blue LED keeps on	Device is connected successfully
Blue LED flashes quickly once	Unable to discover the router
Blue LED flashes quickly twice	Connect to the router but fail to connect to Wi-Fi
Blue LED flashes quickly three times	Upgrading
Red LED flashes quickly	Searching and adding ...

## Features

This is a 433MHz RF bridge with multiple features that allows you to connect a variety of 433MHz wireless devices through switching 433MHz to Wi-Fi. You can set schedules, countdowns, alarm notifications and more.



Remote Control



Single/Countdown Timing



Voice Control



Share Control



Sync Status



Alarm notification



Smart Scene



Camera Feature

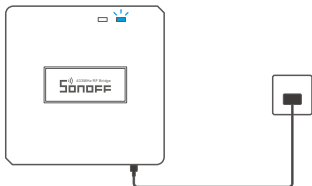
# Operating Instruction

## 1. Download "eWeLink"APP



Android™ & iOS

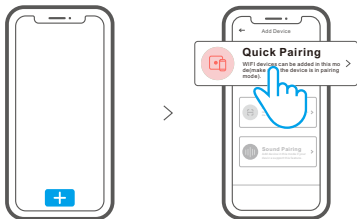
## 2. Power on



Use the Micro USB cable to power the device, After powering on, the device will enter the quick pairing mode during the first use. The Wi-Fi LED indicator changes in a cycle of two short and one long flash.

⚠ The device will exit the quick pairing mode (Touch) if not paired within 3mins. If you want to enter this mode, please long press the pairing button for about 5s until the Wi-Fi LED indicator changes in a cycle of two short and one long flash and release.

## 3. Add Bridge



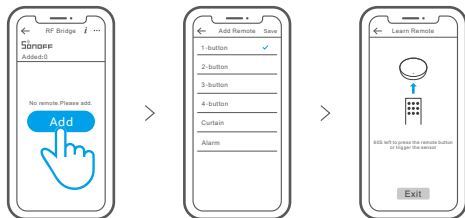
Tap "+" and select "Quick Pairing", then operate following the prompt on the APP.

## Compatible Pairing Mode

If you fail to enter Quick Pairing Mode, please try "Compatible Pairing Mode" to pair.

- 1 Long press Pairing button for 5s until the Wi-Fi LED indicator changes in a cycle of two short flashes and one long flash and release. Long press Pairing button for 5s again until the Wi-Fi LED indicator flashes quickly. Then, the device enters Compatible Pairing Mode.
- 2 Tap "+" and select "Compatible Pairing Mode" on APP.  
Select Wi-Fi SSID with ITEAD-\*\*\*\*\* and enter the password 12345678, and then go back to eWeLink APP and tap "Next". Be patient until pairing completes.

## Learn 433MHz codes



Click "+", select the type of remote control. The device enters the learning mode when you hear a beep from it, and then press the 433MHz remote control or trigger the sensor, and you will hear two beeps to complete the learning process.

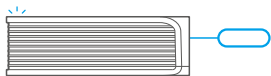
- ⓘ Learn up to 64 433MHz codes.

## Specifications

Model	RF Bridge, RF BridgeR2
Input	5V---1A
RF	433MHz
Wi-Fi	IEEE 802.11 b/g/n 2.4GHz
Operating systems	Android & iOS
Working temperature	-10°C~40°C
Material	RF Bridge: ABS V0, RF BridgeR2: PC V0
Colors	RF Bridge: Black, RF BridgeR2: White
Dimension	62x62x20mm

## Switch Network

If you need to change the network, long press the pairing button for 5s until the Wi-Fi LED indicator changes in a cycle of two short and one long flash and release, then the device enters quick pairing mode and you can pair again.



## Factory Reset

Deleting the device on the eWeLink app indicates you restore it to factory setting.

## Common Problems

Q: Why my device stays "Offline"?

A: The newly added device needs 1 – 2mins to connect Wi-Fi and network. If it stays offline for a long time, please judge these problems by the blue Wi-Fi indicator status:

1. The blue Wi-Fi indicator quickly flashes once per second, which means that the switch failed to connect your Wi-Fi:
  - ① Maybe you have entered a wrong Wi-Fi password.
  - ② Maybe there's too much distance between the switch your router or the environment causes interference, consider getting close to the router. If failed, please add it again.
  - ③ The 5G Wi-Fi network is not supported and only supports the 2.4GHz wireless network.
  - ④ Maybe the MAC address filtering is open. Please turn it off.

**If none of the above methods solved the problem, you can open the mobile datanetwork on your phone to create a Wi-Fi hotspot, then add the device again.**

2. Blue indicator quickly flashes twice per second, which means your device has connected to Wi-Fi but failed to connect to the server.

Ensure steady enough network. If double flash occurs frequently, which means you access an unsteady network, not a product problem. If thenetwork is normal, try to turn off the power to restart the switch.

## FCC Warning

Changes or modifications not expressly approved by the party responsible for compliance could avoid the user's authority to operate the equipment.

This device complies with part 15 of the FCC Rules. Operation is subject to the following two conditions: (1) This device may not cause harmful interference, and (2) this device must accept any interference received, including interference that may cause undesired operation.

### **FCC Radiation Exposure Statement:**

This equipment complies with FCC radiation exposure limits set forth for an uncontrolled environment. This equipment should be installed and operated with minimum distance 20cm between the radiator & your body. This transmitter must not be co-located or operating in conjunction with any other antenna or transmitter.

### **Note:**

This equipment has been tested and found to comply with the limits for a Class B digital device, pursuant to part 15 of the FCC Rules. These limits are designed to provide reasonable protection against harmful interference in a residential installation. This equipment generates, uses and can radiate radio frequency energy and, if not installed and used in accordance with the instructions, may cause harmful interference to radio communications. However, there is no guarantee that interference will not occur in a particular installation. If this equipment does cause harmful interference to radio or television reception, which can be determined by turning the equipment off and on, the user is encouraged to try to correct the interference by one or more of the following measures:

- Reorient or relocate the receiving antenna.
- Increase the separation between the equipment and receiver.
- Connect the equipment into an outlet on a circuit different from that to which the receiver is connected.
- Consult the dealer or an experienced radio/TV technician for help.

Hereby, Shenzhen Sonoff Technologies Co., Ltd. declares that the radio equipment type RF Bridge, RF BridgeR2 is in compliance with Directive 2014/53/EU. The full text of the EU declaration of conformity is available at the following internet address:

<https://sonoff.tech/usermanuals>



**Shenzhen Sonoff Technologies Co., Ltd.**

1001, BLDG8, Lianhua Industrial Park, shenzhen, GD, China  
ZIP code: 518000

Website: [sonoff.tech](https://sonoff.tech)

MADE IN CHINA

